



PEACE RIVER REGIONAL DISTRICT EVACUATION ALERT

EVACUATION ALERT #10

Donnie Creek/Tommy Lakes Wildfire

Electoral Area B

June 12, 2023 at 13:00 hours

An Evacuation Alert has been issued by the Peace River Regional District. BC Wildfire Service has recommended this Alert due to the potential danger to life and health caused by the Donnie Creek/Tommy Lakes wildfire. Evacuation Alert #10 replaces Alert #8.

The Evacuation Alert area applies to:

- 1km North of Buckinghorse River bridge – south along the East side of Highway 97 North to km 260
- West 8km of Highway 97 North due South to the end of Pink Mountain Road
- South following Halfway River to the intersection of Boring Ranch Road and Cypress Creek Road
- Due East to a point of intersection with Highway 97 North at km 177
- Continue due East to the intersection with Beaton Airport Road at km 37
- Continuing due East to the intersection with Prespatou Road at km 30
- To a point approximately 5 km west of Milligan Creek Road
- North approximately 22 km to a point of 1 km west of Milligan Creek Road
- Due West to a point 4 km East of Pink Mountain
- North 4 km East of Highway 97 North to a point of intersection with Sikanni River
- North East for 4 ½ km to Mistahae Creek
- North West to a point of intersection with the Buckinghorse River 11 km East of Highway 97 North
- West following Buckinghorse River to a point 1 km North of the Buckinghorse River Bridge

This is the time to GET PREPARED to leave your home on short notice.

An Evacuation Alert is issued to prepare you to evacuate your premises or property should it be found necessary. Residents will be given as much advance notice as possible prior to evacuation; however, you may receive limited notice due to changing conditions.

- Locate all family members and designate a meeting area outside the evacuation area in case an Evacuation Order is called while you are separated.
- Pack essential items for a quick departure, such as government-issued ID, medications, eyeglasses, valuable papers (e.g., insurance, passports, birth certificates, banking and mortgage information), immediate care needs for dependents, cellphone and charger and, if time and space permits, personal keepsakes.
- Prepare to move people with disabilities, children and neighbours if assistance is needed.
- Prepare to take pets and pet care items (leash, carrier, food) with you.
- Make a plan for livestock, including moving livestock to a safe area (if possible).
- Ensure your cistern or potable water system is full.
- Arrange transportation for all your household members. Fill the gas tanks of personal vehicles.



PEACE RIVER REGIONAL DISTRICT EVACUATION ALERT

- If you will need assistance to evacuate from the area, such as for transportation, mobility, health, or other needs, please call 1-800-670-7773.
- Arrange accommodation for all members of the residence, if possible.
- Wait for an Evacuation Order to be issued before evacuating. Monitor www.prrd.bc.ca and Emergency Info BC for information on evacuation orders and location of Reception Centres and hours of operation.

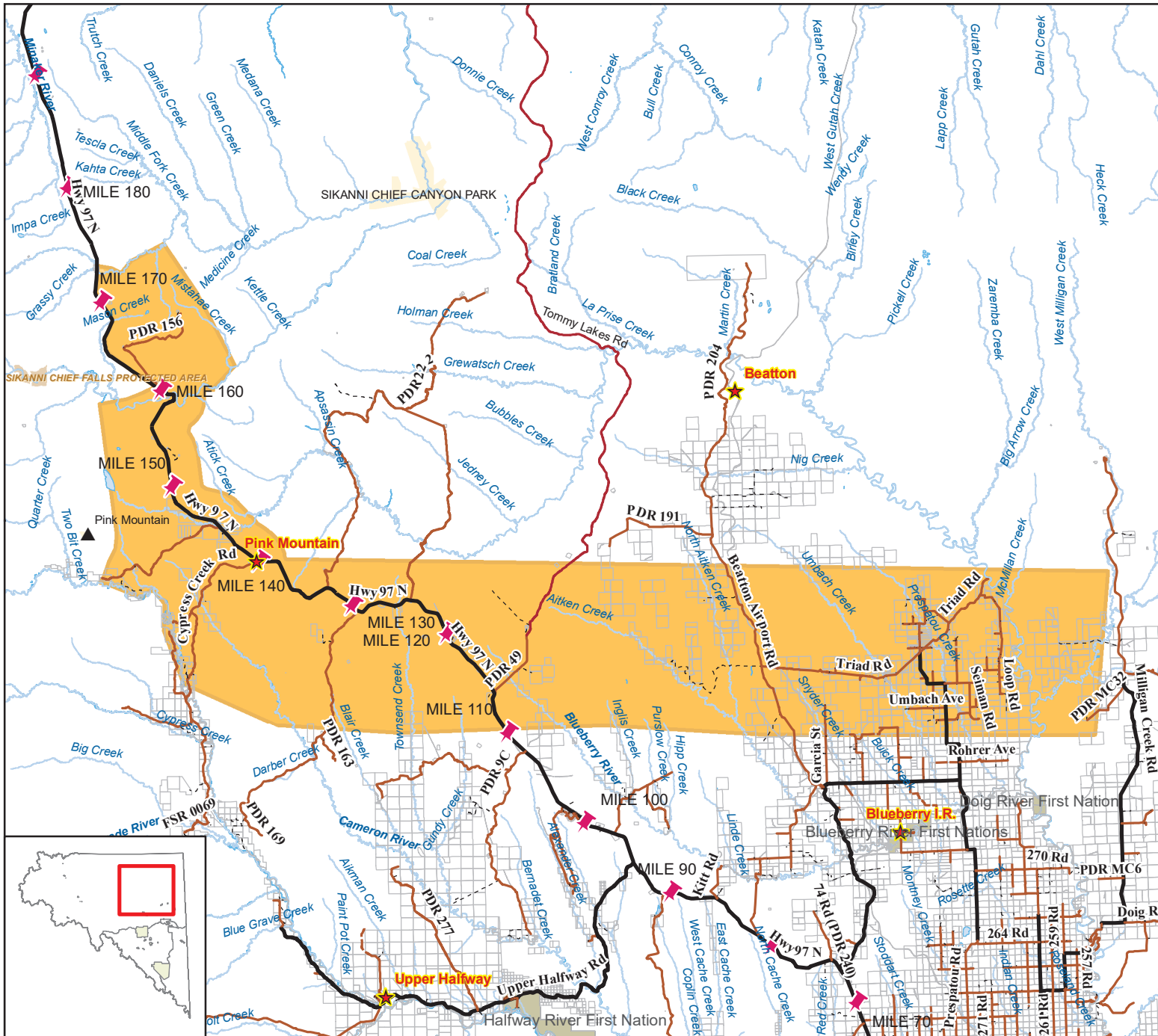
Further information about Evacuation Alerts and Orders will be posted at prrd.bc.ca, and wildfire updates are posted at bcwildfire.ca.

A handwritten signature in black ink, appearing to read "L. Hiebert".

Leonard Hiebert,
Chair, Peace River Regional District



Peace River Regional District



Evacuation Alert #10

Donnie Creek Fire: G80280



1:750,000
 0 5 10 20
 Kilometers

Monday, June 12, 2023

- Evacuation Alert
- Mile Post
- Water Feature
- Electoral
- Municipal
- First Nations
- Ecological Reserve
- Protected Area
- Provincial Park
- Lake/River



Compiled and produced by the Peace River Regional District on Monday, June 12, 2023.