

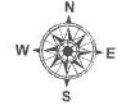


# Peace River Regional District

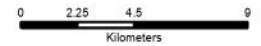
## Evacuation Overview

### Kiskatinaw River Fire

Fire: G70422



1:300,000



Tuesday, June 3, 2025

#### Label

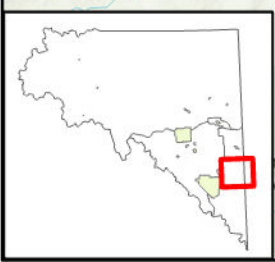
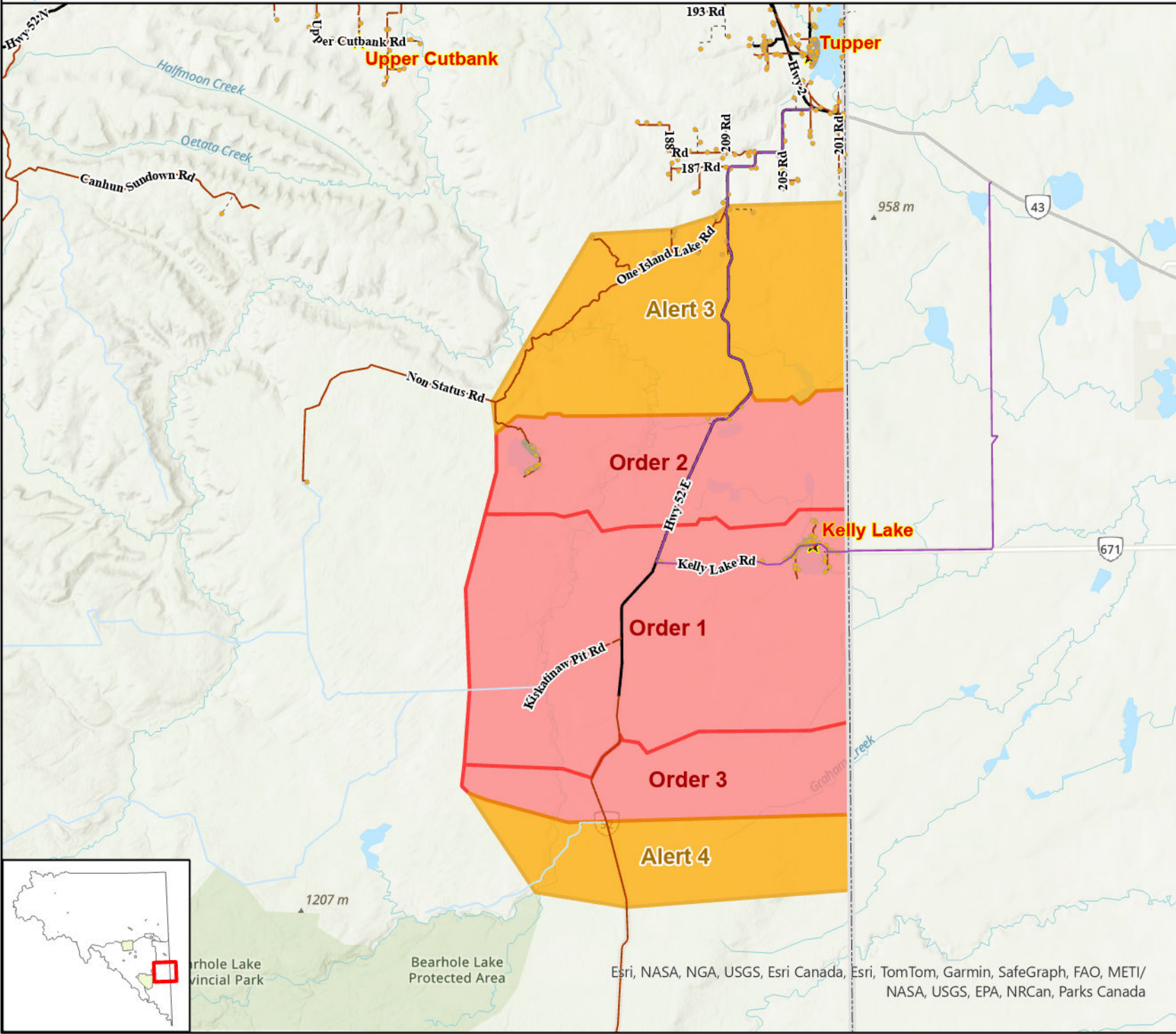
- Evacuation Alert
- Evacuation Order
- Emergency Features
- Evacuation Route
- Building/Residence
- Rural Community
- Mile Marker

#### Roads

- Hard Surface
- Gravel
- Seasonal
- Drive Way
- Resource Road
- First Nations
- BC/Alberta Boarder
- PRRD Boundary
- Electoral
- Municipal

The map only applies to the Peace River Regional District and does not apply to other municipalities or first nations jurisdictions

Compiled and produced by the Peace River Regional District on Tuesday, June 3, 2025.



Esri, NASA, NGA, USGS, Esri Canada, Esri, TomTom, Garmin, SafeGraph, FAO, METI/ NASA, USGS, EPA, NRCan, Parks Canada