



# PEACE RIVER REGIONAL DISTRICT EVACUATION ALERT

## EVACUATION ALERT

### Battleship Mountain & Carbon Lake: Electoral Areas B & E

September 9, 2022 at 16:00hrs

The Peace River Regional District at the Emergency Operations Centre (EOC) has issued an expanded Evacuation Alert, as a proactive measure to ensure that residents have time to prepare should the situation at the Battleship Mountain wildfire (G72150) change in the coming days.

Because of the potential danger to life and health, the Peace River Regional District has issued an **expanded Evacuation Alert** for the following areas:

- All of Twelve Mile Rd, Josef Rd., Dunlevy Rd., Eagle Heights Dr. and Aspen Ridge Dr.;
- Following the eastern boundary of Butler Ridge Provincial Park to the Northern tip, proceeding east until a point intersection Farrell Creek;
- South following Farrell Creek to a point 1km North of Highway 29 North, due West to the District of Hudson's Hope boundary;
- East of Johnson Creek forestry service road at 40km, North following Dowling Creek to the District of Hudson's Hope boundary;
- South along the Hudson's Hope boundary to a point where it intersects Coalbed Creek, and Southwest to a point of intersection with Pete Lake, continuing Southwest to a point of intersection with Moberly Lake forestry service road;
- West following Moberly River to a point including Stublely Creek heading in a north-westerly direction to the boundary of Klin-Se-Za Addition Provincial Park;
- North along the easterly boundary of the Klin-Se-Za Addition Provincial Park, to a point intersecting Dowling Creek and north following Dowling Creek to the Johnson FSR to 40km.

An expanded Evacuation Alert has been issued to prepare you to evacuate your premises or property **should** it be found necessary. Residents will be given as much advance notice as possible prior to evacuation; however, you may receive limited notice due to changing conditions.

### WHAT YOU SHOULD DO:

- Locate all family members and designate a meeting area outside the evacuation area, should an Evacuation Order be called while separated.
- Pack essential items such as government-issued ID, medications, eyeglasses, valuable papers (e.g. insurance, credit, and mortgage information), immediate care needs for dependents, cell phone & charger and, if time and space permits, keepsakes for quick departure.
- Prepare to move disabled persons, children and/or neighbours, if assistance is needed.
- Prepare to take pets with you including pet care items (leash, carrier, food) and move livestock to a safe area (if possible).
- Arrange transportation for all your household members. Fill the gas tanks of personal vehicles. If transportation assistance is needed, call 1-800-670-7773.



Please ensure that your household is signed up to receive notifications from the PRRD.

[www.nebcalerts.com](http://www.nebcalerts.com)



# PEACE RIVER REGIONAL DISTRICT EVACUATION ALERT

- Arrange accommodation for all members of the residence, if possible.
- Wait for an Evacuation Order to be issued before evacuating. Monitor [www.prrd.bc.ca](http://www.prrd.bc.ca) and Emergency Info BC for information on evacuation orders and location of Reception Centres and hours of operation.
- Sign up for North East BC (NEBC) Emergency Alerts to get notified of important emergency information in the Peace region. Download the app by searching 'Everbridge' wherever you get your apps, or register online at [nebcalerts.com](http://nebcalerts.com).

Further information will be issued at [www.prrd.bc.ca](http://www.prrd.bc.ca) and on the PRRD's Facebook [page](#) at Peace River Regional District "Official Page".

ORIGINAL SIGNED BY  
Chair Brad Sperling  
Peace River Regional District



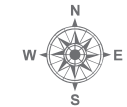
Please ensure that your household is signed up to receive notifications from the PRRD.

[www.nebcalerts.com](http://www.nebcalerts.com)



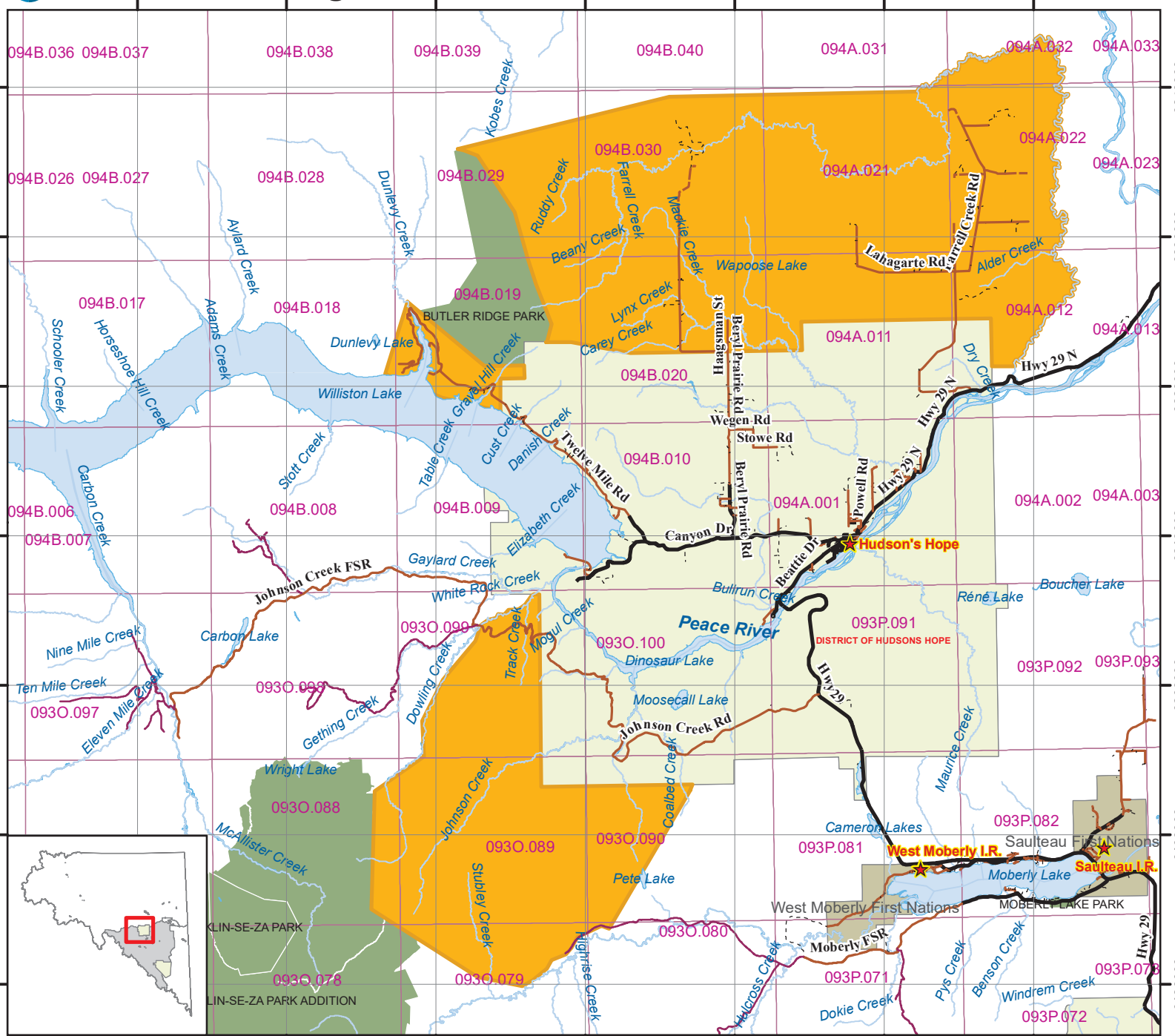
# Peace River Regional District


## Evacuation Alert for Battleship Mountain Alert #3 Fire: G72150



1:375,000  
0 2.75 5.5 11  
Kilometers

Friday, September 9, 2022



-  Evacuation Alert
-  Mile Post
-  Water Feature
-  B.C.G.S Map Sheet
-  Electoral
-  Municipal
-  First Nations
-  Ecological Reserve
-  Protected Area
-  Provincial Park
-  Lake/River



Compiled and produced by the Peace River Regional District on Friday, September 9, 2022.