



EVACUATION ALERT #7
Kiskatinaw River Wildfire (G70422)
Electoral Area D
June 11, 2025, at 1530

This Evacuation Alert is issued by the Peace River Regional District at the Emergency Operations Centre (EOC), due to the Kiskatinaw River Wildfire.

Because of the potential threats to health, safety, and the welfare of persons, this **Evacuation Alert** is issued for the following areas:

- From the junction of Hwy 2 and Hwy 52 E
- Following the South side of Hwy 2 to the Alberta border
- South following the Alberta border for 6 km
- 5.2 km West to a point 1.6 km East of Hwy 52 E
- Due South 3.2 km
- Due West 1.6 km to a point of intersection with Hwy 52 E
- South following Hwy 52 E for 0.7 km
- From said point 3.2 km due West
- Due North 1.6 km
- Easterly 2.1 km to a point of intersection of One Island Lake Rd and Weaver Rd.
- Westerly 7.4 km to a point of intersection with Kiskatinaw River
- Northerly following the Kiskatinaw river for approximately 8 km
- Due East 11.5 km
- Due North 1.6 km
- East 0.8 km
- South 0.8 km
- East 1.6 km
- South 1.6 km to a point of intersection with 188 Rd.
- East 4.9 km
- North 1.6 km
- East 2.8 km to a point of intersection of Hwy 2
- Easterly following the South side of Hwy 2 for 0.8 km to a point of intersection with Hwy 52 E

An Evacuation Alert has been issued to prepare you to evacuate your premises or property should it be found necessary. Residents will be given as much advance notice as possible prior to evacuation; however you may receive limited notice due to changing conditions.

WHAT YOU SHOULD DO:

- Locate all family members and designate a meeting area outside the evacuation area, should an Evacuation Order be called while separated.
- Pack essential items such as government-issued ID, medications, eyeglasses, valuable papers (e.g. insurance, credit, and mortgage information), immediate care needs for



dependents and, if time and space permits, keepsakes for quick departure.

- Prepare to move disabled persons, children and/or neighbours, if assistance is needed.
- Prepare to take pets with you and move livestock to a safe area (if possible).
- Arrange transportation for all your household members. Fill the gas tanks of personal vehicles. If transportation assistance is needed, call 1-800-670-7773.
- Arrange accommodation for all members of the residence, if possible.
- Wait for an Evacuation Order to be issued before evacuating. Monitor www.prrd.bc.ca for information on evacuation orders and location of Reception Centres.

Further information about Evacuation Alerts and Orders and other important information will be posted at www.prrd.bc.ca and wildfire updates will be posted at bcwildfire.ca.

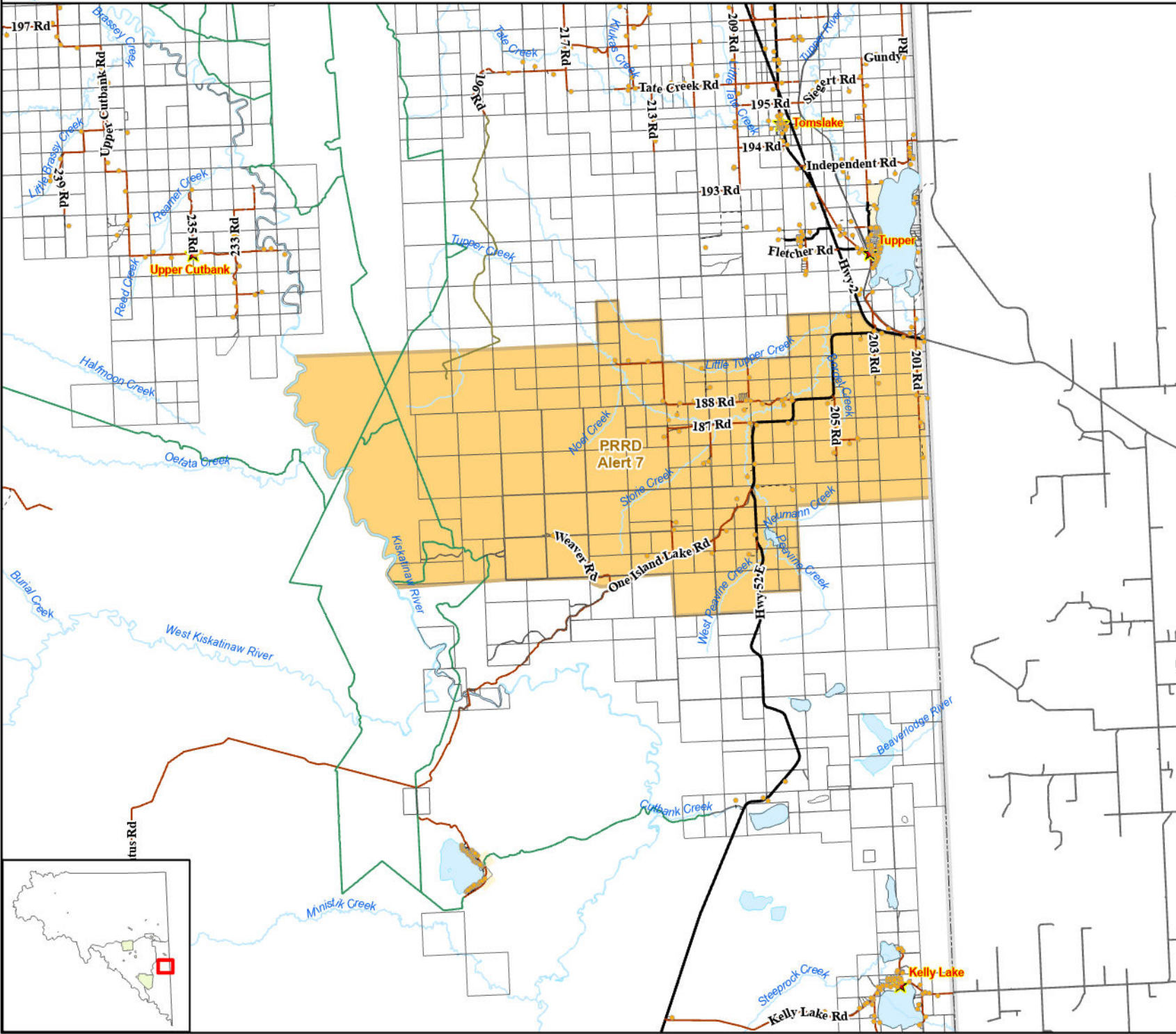
Original Signed By

Leonard Hiebert, Chair

Peace River Regional District



Peace River Regional District



Evacuation Alert # 7

Kiskatinaw River Fire

Fire: G70422



Wednesday, June 11, 2025

- Evacuation Alert
 - Building/Residence
 - Rural Community
 - Mile Marker
- Roads**
- Hard Surface
 - Gravel
 - Seasonal
 - Drive Way
 - Resource Road
 - PARCELS
 - Water Feature
 - Rivers
 - Lake/River
 - Ecological Reserve
 - Protected Area
 - Provincial Park
 - First Nations
 - BC/Alberta Boarder
 - PRRD Boundary
 - Electoral
 - Municipal

The map only applies to the Peace River Regional District and does not apply to other municipalities or first nations jurisdictions

Compiled and produced by the Peace River Regional District on Wednesday, June 11, 2025.

