



## EVACUATION ALERT # 2

### Pocket Knife Creek Wildfire (G80352)

June 08, 2025 at 1700

An Evacuation Alert has been issued by the Peace River Regional District at the Emergency Operations Centre (EOC). BC Wildfire Service has recommended this Alert due to the potential danger to life and health caused by the Pocket Knife Creek Wildfire.

The **Evacuation Alert** is in effect for the following areas:

- Starts 3.4 km west of the 330 Mile marker of Hwy 97N on the Minaker River
- North for 7.1 km
- West for 14.9 km
- South for 7.5 km
- East for 13.7 km to the point on the Minaker River

This is the time to **GET PREPARED** to leave your home on short notice.

An Evacuation Alert has been issued to prepare you to evacuate your premises or property should it be found necessary. Residents will be given as much advance notice as possible prior to evacuation; however, you may receive limited notice due to changing conditions.

### WHAT YOU SHOULD DO:

- Locate all family members and designate a meeting area outside the evacuation area, should an Evacuation Order be called while separated.
- Pack essential items such as government-issued ID, medications, eyeglasses, valuable papers (e.g. insurance, credit, and mortgage information), immediate care needs for dependents and, if time and space permits, keepsakes for quick departure.
- Prepare to move disabled persons, children and/or neighbours, if assistance is needed.
- Prepare to take pets with you and move livestock to a safe area (if possible).
- Arrange transportation for all your household members. Fill the gas tanks of personal vehicles. If transportation assistance is needed, call 911.
- Arrange accommodation for all members of the residence, if possible.
- Wait for an Evacuation Order to be issued before evacuating. Monitor [www.prrd.bc.ca](http://www.prrd.bc.ca) for information on evacuation orders and location of Reception Centres.



PEACE RIVER REGIONAL DISTRICT

Further information about Evacuation Alerts and Orders, and other important information will be posted at [www.prrd.bc.ca](http://www.prrd.bc.ca) and wildfire updates are posted at [bcwildfire.ca](http://bcwildfire.ca).

Original Signed By

---

Leonard Hiebert, Chair

Peace River Regional District



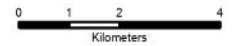
# Peace River Regional District

## Evacuation

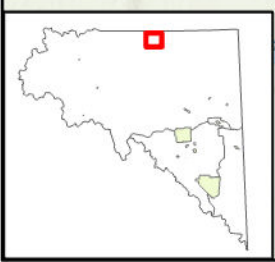
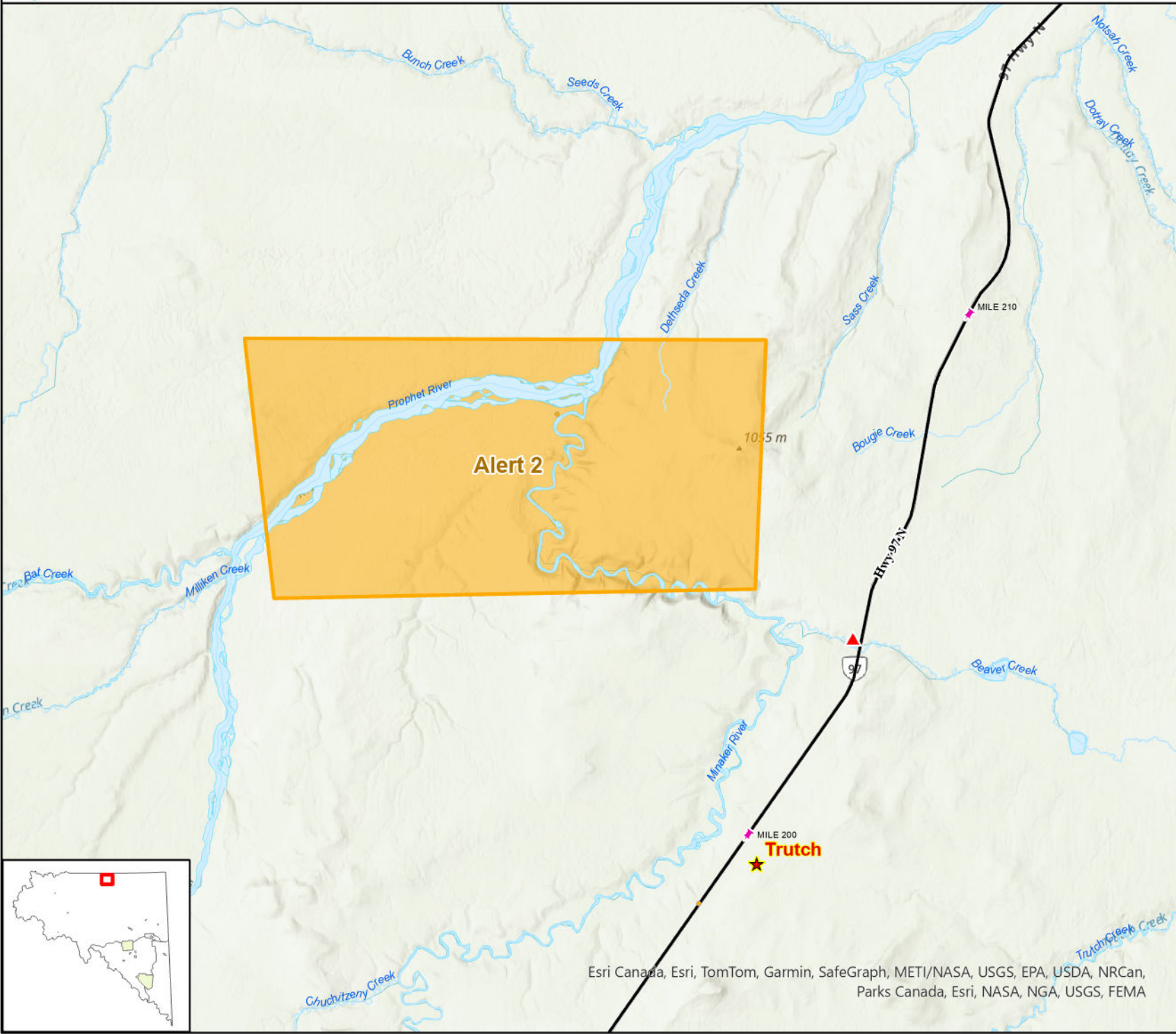
## Alert #2

## Pocket Knife Creek Fire

Fire: G80352



Sunday, June 8, 2025



- Evacuation Alert
  - Emergency Features
  - Building/Residence
  - Rural Community
  - Mile Marker
- Roads
- Hard Surface
  - Gravel
  - Seasonal
  - Drive Way
  - Resource Road
  - Water Feature
  - Rivers
  - Lake/River
  - First Nations
  - BC/Alberta Boarder
  - PRRD Boundary
  - Electoral
  - Municipal

Esri Canada, Esri, TomTom, Garmin, SafeGraph, METI/NASA, USGS, EPA, USDA, NRCan, Parks Canada, Esri, NASA, NGA, USGS, FEMA

The map only applies to the Peace River Regional District and does not apply to other municipalities or first nations jurisdictions

Compiled and produced by the Peace River Regional District on Sunday, June 8, 2025.