



EVACUATION ALERT # 4
Pocket Knife Creek Wildfire (G80352)
June 13, 2025, at 1700

This Evacuation Alert is by the Peace River Regional District due to a potential danger to life and health caused by the Pocket Knife Creek Wildfire.

Because of the potential threats to health, safety, and the welfare of persons, this **Evacuation Alert** is issued for the following areas:

- From Km Marker 325 on Highway 97N
- Following Hwy 97N, for a buffer ranging between 3.5 km – 6.5 km along Hwy 97N, on east and west sides,
- South to Km Marker 275 on Hwy 97N
- Northwest for 6 km
- North-Northwest for 5 km
- West for .4 km
- Southwest for 7.8 km
- West for 42.5 km
- South for 6.15 km
- East for 11.8 km
- South for 18.8 km
- Southeast for 57.5 km to Hwy 97N
- Continuing southeast 9 km
- Northwest for 14.8 km
- Southeast for 13 km to the Km Marker 275 on Hwy 97N

This evacuation alert is issued to prepare you to evacuate your premises or property should an evacuation order be made. Residents will be given as much advance notice as possible before evacuation is ordered; however, you may receive limited notice due to changing conditions.

WHAT YOU SHOULD DO:

- Locate all family members and designate a meeting area outside the evacuation area, should an Evacuation Order be called while separated.
- Pack essential items such as government-issued ID, medications, eyeglasses, valuable papers (e.g. insurance, credit, and mortgage information), immediate care needs for dependents and, if time and space permits, keepsakes for quick departure.
- Prepare to move disabled persons, children and/or neighbours, if assistance is needed.
- Prepare to take pets with you and move livestock to a safe area (if possible).
- Arrange transportation for all your household members. Fill the gas tanks of personal vehicles. If transportation assistance is needed, call 1-800-670-7773.
- Arrange accommodation for all members of the residence, if possible.



- Wait for an Evacuation Order to be issued before evacuating. Monitor www.prrd.bc.ca for information on evacuation orders and location of Reception Centres.

Further information about Evacuation Alerts and Orders and other important information will be posted at www.prrd.bc.ca and wildfire updates are posted at bcwildfire.ca.

Original Signed By

Leonard Hiebert, Chair
Peace River Regional District

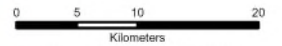


Peace River Regional District

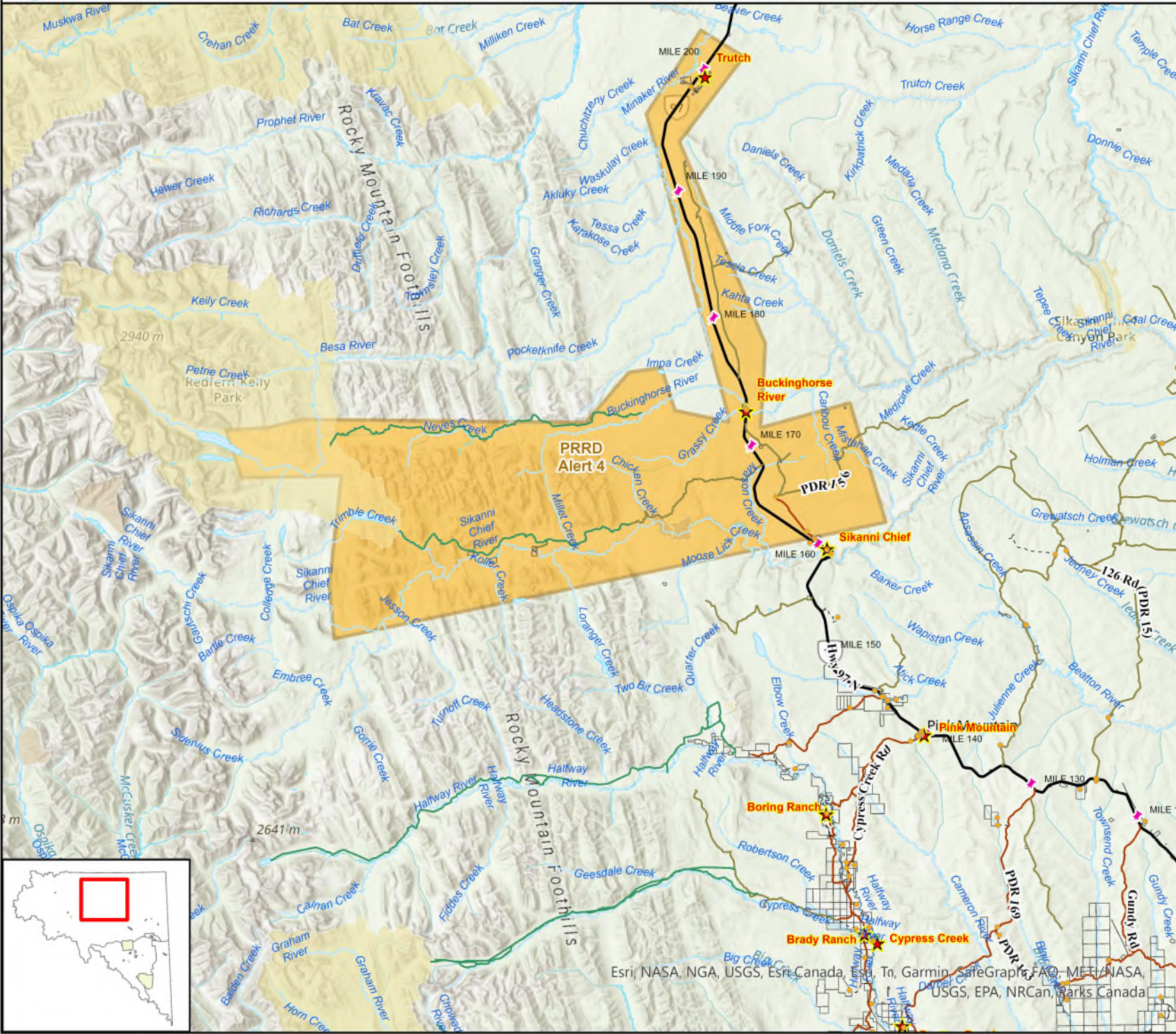
Evacuation Alert # 4

Pocket Knife Creek Fire

Fire: G80352



Friday, June 13, 2025



PRRD Alert 4

PDR 15

PDR 16

PDR 15

PDR 16

PDR 16

PDR 16

- Evacuation Alert
 - Building/Residence
 - Rural Community
 - Mile Marker
- Roads**
- Hard Surface
 - Gravel
 - Seasonal
 - Drive Way
 - Resource Road
- Other Features**
- PARCELS
 - Water Feature
 - Rivers
 - Lake/River
 - Ecological Reserve
 - Protected Area
 - Provincial Park
 - First Nations
 - BC/Alberta Boarder
 - PRRD Boundary
 - Electoral
 - Municipal

