



## **EVACUATION ORDER #3**

### **Pocket Knife Creek Wildfire (G80352)**

**June 9, 2025 at 1330**

Whereas a state of local emergency was declared on June 9, 2025, by Peace River Regional District pursuant to Section 95 of the *Emergency and Disaster Management Act* due to the Pocket Knife Creek Wildfire within the area of *Electoral Area B* in the *Peace River Regional District*.

And whereas Section 107 (1)(c) and (d) of the *Emergency and Disaster Management Act* authorizes requiring evacuations in relation to a declared state of local emergency, making arrangements for the adequate care and protection of evacuated persons and animals, and controlling travel to or from an area;

And whereas the Pocket Knife Creek Wildfire is a significant threat to the health, safety, and welfare of persons, such that an evacuation and controlling travel is necessary to minimize threats;

This **Evacuation Order** has been issued by Peace River Regional District and is **effective as of June 9, 2025, at 1330** for the following areas:

- 1.4 km from a point North of Sikanni Chief Bridge
- From said point on Hwy 97N in a Southwesterly direction 57.5 km
- North 56 km
- To a point of intersection with existing evacuation Order #1
- Following Order #1 boundary Easterly direction to a point of intersection with the most Southwesterly tip of Evacuation Order #2
- Along the Southerly boundary of Order #2 to the Southeasterly most point
- Easterly 11km
- Southerly for approximately 15 km
- Approximately 10 km Southwesterly to a point of intersection with Hwy 97N

**Includes portions of Sikanni Chief River, Chicken Creek, Grassy Creek, Trimble Creek, Trimble Lake and Colter Creek. This Evacuation Order includes the following addresses: 25752 PDR 156; 27239 Sikanni Chief Road and 26708 Sikanni Chief Road.**

**YOU MUST LEAVE THE AREA IMMEDIATELY**



## WHAT YOU SHOULD DO:

- Head south to Fort St. John. If you need evacuation assistance, go to the Pomeroy Sports Centre at 9324 96th Street, open 12:00 pm – 4:30pm, Monday, June 9, 2025. After hours phone number is 250-794-3310.
- If you need transportation assistance from the area, call 911.
- Shut off all gas and electrical appliances, other than refrigerators and freezers.
- Close all windows and doors.
- Close gates (latch) but do not lock.
- Gather your family and, if you have room, take a neighbour or someone needing transportation. Do not use more vehicles than you have to.
- Take critical items (medicine, purse, wallet, and keys) only if they are immediately available. Take pets in pet kennels or on leash.
- Do not use the telephone unless you need emergency service.

For further information on evacuation Alerts and Orders and other important information visit [www.prrd.bc.ca](http://www.prrd.bc.ca) for more information. Wildfire updates are posted at [bcwildfire.ca](http://bcwildfire.ca)

Original Signed By \_\_\_\_\_

Leonard Hiebert, Chair

Peace River Regional District



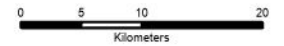
# Peace River Regional District

## Evacuation Order # 3 Pocket Knife Creek Fire

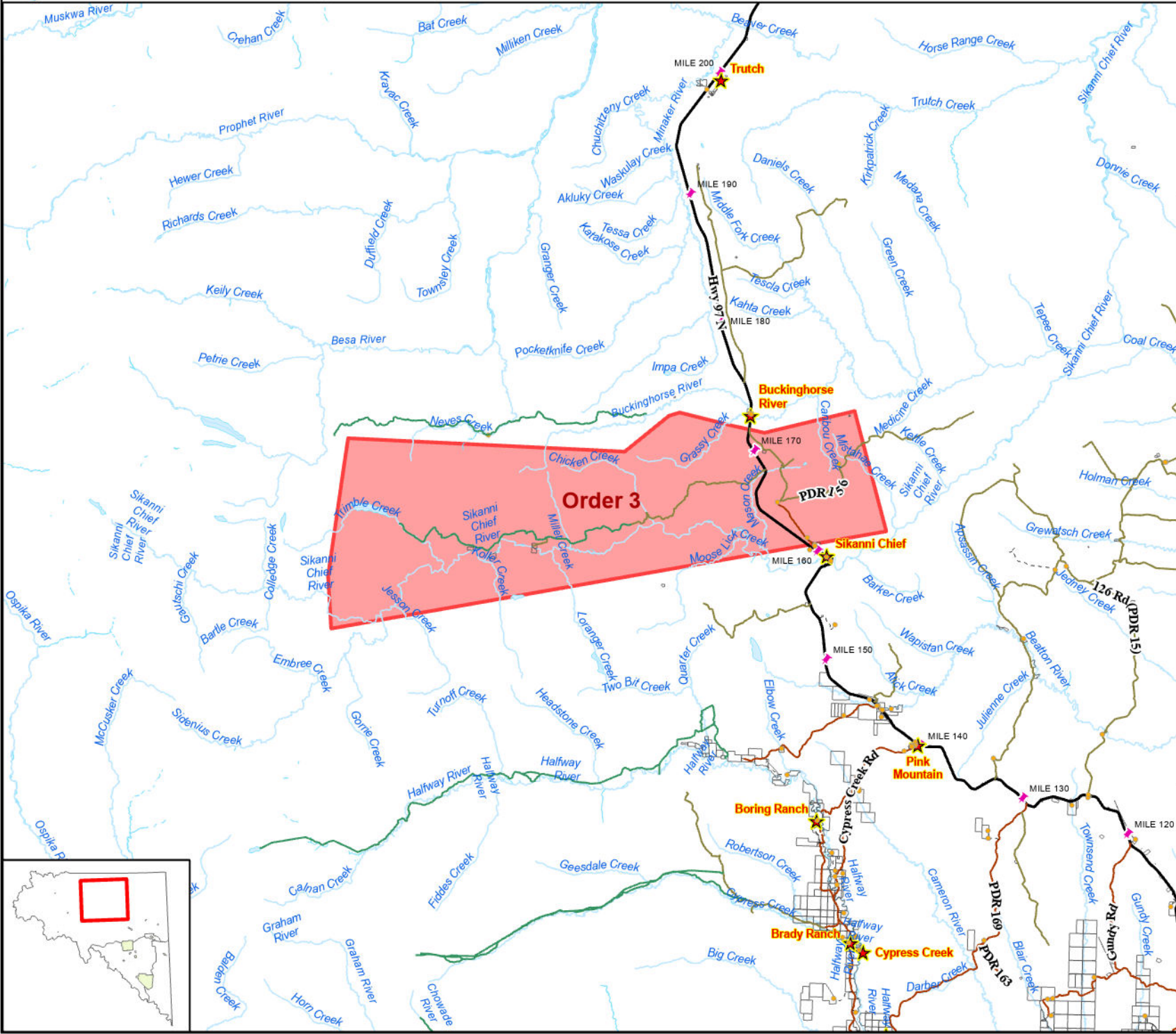
Fire: G80352



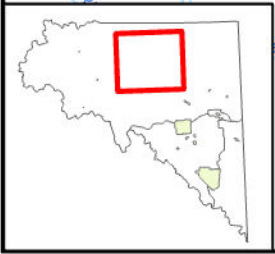
1:625,000



Monday, June 9, 2025



- Evacuation Order
  - Building/Residence
  - Rural Community
  - Mile Marker
- Roads**
- Hard Surface
  - Gravel
  - Seasonal
  - Drive Way
  - Resource Road
  - PARCELS
  - Water Feature
  - Rivers
  - Lake/River
  - First Nations
  - BC/Alberta Boarder
  - PRRD Boundary
  - Electoral
  - Municipal



The map only applies to the Peace River Regional District and does not apply to other municipalities or first nations jurisdictions.  
Compiled and produced by the Peace River Regional District on Monday, June 9, 2025.